

Blast Chillers CW

Blast Chiller Crosswise - 28 kg (Remote)

ITEM # _____

MODEL # _____

NAME # _____

SIS # _____

AIA # _____


726623 (RBC101R)

 Blast Chiller 28kg,
 compatible with 10x1/1GN
 crosswise Oven, remote

Short Form Specification

Item No. _____

- Blast chiller with digital temperature and time display
- For 10 GN 1/1 or 600x400 mm trays
- Load capacity: chilling 28 kg (UK guidelines)
- Single sensor core probe
- Operating air temperature: +3 -12°C
- Automatic and manual defrosting
- Turbo cooling function
- Specific cycles for ice cream
- Evaporator with antirust protection
- HACCP and Service alarms with data logging
- Main components in 304 AISI stainless steel
- Internal rounded corners and drain
- Cyclopentane insulation (HCFC, CFC and HFC free)
- Remote refrigeration unit (optional accessory)
- R134a refrigerant gas (HCFC and CFC free)
- Performance guaranteed at ambient temperatures of 40°C

Main Features

- Blast Chilling cycle: 28 kg from 90°C up to 3°C in less than 90 minutes.
- Soft Chilling (air temperature -2°C).
- Hard Chilling (air temperature -12°C).
- Holding at 3 °C for chilling, automatically activated at the end of each cycle, to save energy and maintain the target temperature (manual activation is also possible).
- Turbo cooling: chiller works continuously at the desired temperature; ideal for continuous production.
- Control unit provides two large displays to read out: time, core temperature, cycle countdown, alarms, service information.
- Two customizable cycles (P1 & P2) for each operating mode, allowing to set the time and air temperature. These programs can be converted into ice-cream specialized cycles (shape maintenance and holding).
- All information related to the different operating models are recorded: date, time, cycle, core temperature, holding temperature, HACCP accordance.
- Remaining time estimation for probe-driven cycles based on artificial intelligence techniques (ARTE) for an easier planning of the activities.
- Single sensor core probe as standard.
- Performance guaranteed at ambient temperatures of +40°C.
- Automatic and manual defrosting.

Construction

- Refrigerant type: R134a.
- High density polyurethane insulation, 60 mm thickness, HCFC free.
- 304 AISI stainless steel construction throughout.
- Seamless hygienic inner cell with all rounded corners for easy cleaning.
- Swing hinged front panel for easy service access to main components.
- Ventilator swinging hinged panel for access to the evaporator for cleaning.
- Waste water can be plumbed into drain, but can also be collected in an optional waste container.
- Requires remote refrigeration connection.
- Removable magnetic door gasket with hygienic design.

APPROVAL: _____

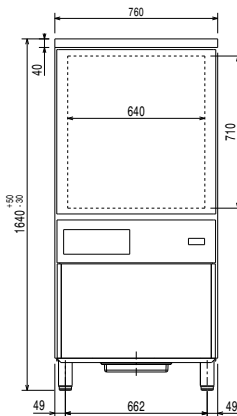
Included Accessories

- 1 of 1 single-sensor probe for blast chiller and blast chiller&freezers PNC 880213

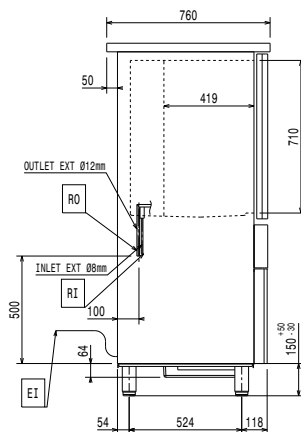
Optional Accessories

- Connectivity kit for AOC/EasyLine and CW Blast Chillers/Blast Chiller Freezers (ECAP) PNC 880183
- Rilsan grid 600x400mm PNC 880864
- Plastic coated grid, 1/1GN PNC 881061
- Roll-in guide runners for 28 kg blast chillers and blast chiller&freezers 1/1GN PNC 881518
- Pair of 1/1GN AISI 304 stainless steel grids PNC 921101
- 80mm pitch side hangers 10x1/1GN electric oven PNC 922115
- 80mm pitch side hangers 10x1/1GN gas oven PNC 922116
- 60mm pitch side hangers 10x1/1GN electric oven (included with the oven) PNC 922121
- 60mm pitch side hangers 10x1/1GN gas oven (included with the oven) PNC 922122
- Trolley for 10x1/1GN and 10x2/1GN roll-in rack PNC 922128
- Trolley for 10x1/1GN roll-in rack PNC 922130
- Kit to convert to 10x1/1GN roll-in rack PNC 922201
- Ethernet connector for ECAP protocol appliances PNC 922768

Front

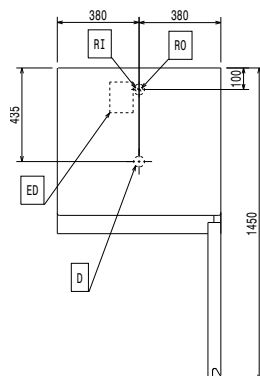


Side



D = Drain
 EI = Electrical inlet (power)
 RO = Refrigerant Outlet

Top



Electric

Supply voltage:

726623 (RBC101R) 220-240 V/1 ph/50/60 Hz

Electrical power max.:

0.12 kW

Circuit breaker required

Note: electrical power, current consumption and defrost power are necessary for installation.

Installation:

Clearance: 5 cm on sides and back.

Please see and follow detailed installation instructions provided with the unit

Capacity:

GN: 10 - 1/1 containers

Max load capacity: 28 kg

Key Information:

External dimensions, Width: 760 mm

External dimensions, Depth: 760 mm

External dimensions, Height: 1640 mm

Net weight: 114 kg

Shipping weight: 134 kg

Shipping volume: 1.33 m³

Refrigeration Data

Control type: Electronic

Suggested refrigeration power: 1700 W

Condition at evaporation temperature: -10 °C

Condition at condensation temperature: 45 °C

Condition at ambient temperature: 32 °C

Connection pipes (remote) - outlet: 12 mm

Connection pipes (remote) - inlet: 8 mm

Refrigeration power calculated at a distance of linear 20mt.

Sustainability

Current consumption: 0.62 Amps

Refrigerant type: R134a

GWP Index: 1300